



# MAITAI

POLYNESIA BORA BORA

La Perle du Pacifique



Information & Reservation :

P.O. Box 505 - 98730 Bora Bora - French Polynesia  
phone: (689) 603 000 - Fax : (689) 676 603

e-mail : [booking@bora.hotelmaitai.com](mailto:booking@bora.hotelmaitai.com) - Web site : [www.hotelmaitai.com](http://www.hotelmaitai.com)

Managed by HOTEL MANAGEMENT & SERVICES



You have always been dreaming of one the most beautiful lagoon in the world and of the old imposing volcano peak emerging from the sea. Bora Bora is accessible at last! The Pearl of the Pacific, as baptised by Captain Cook when discovered, offers legendary scenery. Approximately 10 km long by 4 km wide, Bora Bora's Mounts Pahia and Otemanu culminate at 700 meters of altitude. Draped in exuberant tropical vegetation, the attractive beaches and the motus (islets) scattered on the crystal-clear waters are a permanent invitation for discovery and exploring.

The unbelievably numerous shades of the lagoon around Matira Point are breathtaking, as if embedded with jade, turquoise and sapphire. The white sand beach leads to the warm and mesmerizing waters where a multitude of colourful fishes, corals and shells live.

Nestled in such an exceptional setting, Le Maitai Polynesia Hotel is the ideal place for an unforgettable stay. Located at the Southern tip of the island, within walking distance of famous Matira Point, this charming, romantic property provides the amenities and services that are such an incredible value for money at a Three-star Plus hotel. Natural materials (pandanus thatched roofs, woven bamboo for the beach and overwater bungalows, rare and exotic woods, etc.) combined with elements of traditional Polynesian design including shells, carved mother-of-pearl and woods, are contributing to a warm atmosphere.

The island interior and its heights open to unsuspected panoramas and are filled with ancient legends or more recent history to be discovered during excursions. And when returning from a day filled with sensations and wonderful light, the calm and intimacy of your bungalow or room is waiting for you. The bar is the ideal place to relax around tropical fruit cocktails and one of the two restaurants proposes an original recipe blending the original flavours of a quality French cuisine with the aromas of Polynesian ingredients.

## ACCOMMODATION

Le Maitai Polynesia is nestled against the mountain with its public areas and air-conditioned rooms, both categories of Garden and Ocean view. The Beach and Overwater bungalows are air-conditioned and are located on the other side of the street by the beach.

A lot of wood such as bamboo, mahogany from Moorea, teak or kohu and other tropical species, combined with pandanus thatched roofs, contribute to a warm atmosphere. The landscaping is unique with many different varieties of plants and flowers, well taken care of by one of the owners, a lady from Bora Bora.

Le Maitai Polynesia features a total of 74 units:

28 air-conditioned Garden view Rooms (king size bed or twins),

20 air-conditioned Ocean view Rooms (king size bed or twins),

7 air-conditioned Beach Bungalows (overhead fan, king size bed + sofa bed)

19 air-conditioned Overwater Bungalows (overhead fan, king size bed + sofa bed)

All units feature a balcony or a terrace, some rooms are larger and equipped for a third person with a pull-out coach or a sofa bed. Children under 16 years of age share with adults at no extra cost. Baby cots are available at no extra charge.

Bungalows and rooms are equipped with air-conditioning TV, IDD phone, in-room safe, stocked minibar, 110/220 volts outlets.

The bathroom features a shower, and it is garnished with room amenities and equipped with hairdryer.

## BAR & RESTAURANT

### Haere Mai Restaurant « Come! »

The HAERE MAI RESTAURANT is the first place to start the day for buffet breakfast, with eggs upon request for American breakfast.

Depending on the time of the year, the HAERE MAI welcomes generally on Wednesdays the Polynesian Evening with a great seafood and Polynesian buffet including a traditional and entertaining show with fire dance among other attractions.

### Tama'a Maitai Beach Restaurant « Bon Appétit! »

Facing the lagoon in a « Fare potee » style : aito wood – or iron wood – and pandanus roof, with an open kitchen, the TAMA'A MAITAI BEACH RESTAURANT is open non-stop from lunch time until dinner. Snacks, pizzas, great burgers as well as more elaborate specialties for dinner are available in a relaxing ambiance a few feet from the lagoon.

### Manuia Bar « Cheers! »

Surrounded by luxurious gardens, the MANUIA BAR is a cool place to enjoy Happy Hours and listen to a trio of local Tahitian music live band. Drinks, exotic cocktails, local beers are served.

## OTHER HOTEL SERVICES

- Front Desk open 24 hours a day with foreign exchange, fax service
- Internet Access Corner available in Lobby area
- Guest Relations/Activities
- Car, scooter and bicycle rental (located in the Hotel)
- Boutiques (natural cultured black pearl jewellery, and souvenirs, handicraft and fashion)
- Laundry service
- Baby-sitting on request
- Doctor on request
- Changing room with shower for early arrivals or late departures

## ACTIVITIES AND EXCURSIONS

A large choice of recreational activities and excursions has been selected and made available by the Activities Desk :

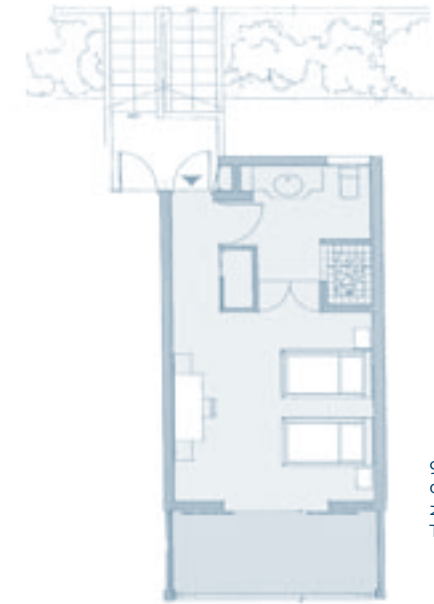
- Transfers by speed boat to the islet – or Motu (taxi boat)
- Half-day shark feeding tour on motorized outrigger pirogue
- Full day shark and ray feedings, including Motu picnic, on motorized outrigger pirogue
- 4WD Jeep Safari island tour
- Lagoonarium tour
- Scuba diving
- Guided island tour on wave runners
- Catamaran sail cruises (half day, private tour, sunset cruise)
- Deep sea fishing
- Lagoon trolling and fishing
- Parasailing
- Waterskiing
- Glass bottom boat tour
- Horseback riding (on the Motu)
- Quad excursion
- Massages
- Boat rental
- Submarine tour

The above list is not exhaustive and is subject to changes.

Le Maitai Polynesia of Bora Bora also provides Free Of Charge snorkeling equipment, outrigger canoes and kayaks to discover and enjoy Bora Bora's beautiful lagoon across the beachfront of the property.

## GENERAL INFORMATION

- Currency : French Pacific Franc, banks and cash dispensers at Vaitape.
- Hotel Exchange Facilities (Euro, US\$, Yen, AU\$, NZ\$).
- Credit Cards : major credit card are accepted, including Visa, JCB, Mastercard, American Express, Diners.
- Service Charge & Tipping : none ; tipping is not part of the island's custom, smiling and an open-minded attitude towards the staff and the inhabitants is certainly one of the best reward visitors can offer. This is certainly the best way to preserve and encourage the tradition of hospitality.
- Check-In & Check-Out Time : 02:00 pm and 11:00 am. Le Maitai Polynesia manages as much as possible to allow guests to obtain their bungalow or room upon arrival, and also arrange whenever feasible late check-out or for guests to keep their bungalow longer.
- Power and plugs : 220 V – 60 Hz (110 V plug for razor only)
- Language : Tahitian and French. English is spoken and understood by a majority of the Hotel staff.
- Climate : Bora Bora benefit from a pleasant tropical climate, cooled by trade winds, and Matira Point area in particular has most of the time at least a breeze. Sunshine averages about 2,600 hours per year. Higher temperatures are experienced from December until February or March (27°C -32°C / 80°F-89°F), the rest of the year being cooler and the atmosphere less humid (25°C -28°C / 77°F-82°F).
- Position of the island : Northwest of Tahiti, daily air service with Air Tahiti from Papeete with 50 minutes for direct flights.
- Airport : Passengers identify their luggage upon arrival at airport to have them transferred to the Air Tahiti boat shuttle to the main island and Vaitape village (20-minute trip). Le Maitai Polynesia is approximately 8 km (5 miles) from Vaitape pier where pick up is organized with transfer by minibus.
- What to wear : Casual and informal is a standard, cotton and light clothes may be worn all year round. However, a sweater or light pullover may be required in the evenings, especially when a bit windy. A lightweight plastic raincoat can prove useful in case of shower rains.



garden and ocean view Rooms :  
27 sq.m  
Terrace : 7,5 sq.m



Bungalows :  
27 sq.m  
Terrace : 8 sq.m



Other Maitai hotel in French Polynesia :  
MAITAI RANGIROA

P.O. Box 192 - 98775 Avatoru – Rangiroa - French Polynesia  
Phone : (689) 931 350 - Fax : (689) 931 351  
Web site : [www.hotelmaitai.com](http://www.hotelmaitai.com) - [info@rangiroa.hotelmaitai.com](mailto:info@rangiroa.hotelmaitai.com)